

Installing and configuring NTP in Windows 10/11

There have been many discussions about time synchronization on Windows computer systems and WSJTX. Some are using no synchronization, others various SNTP (Simple Network Time Protocol) applications (e.g. Dimension4, TimeSyncTool, BktTimeSync, etc.). However, a full NTP installation is available, simple, free and is recommended by the developers of WSJTX.

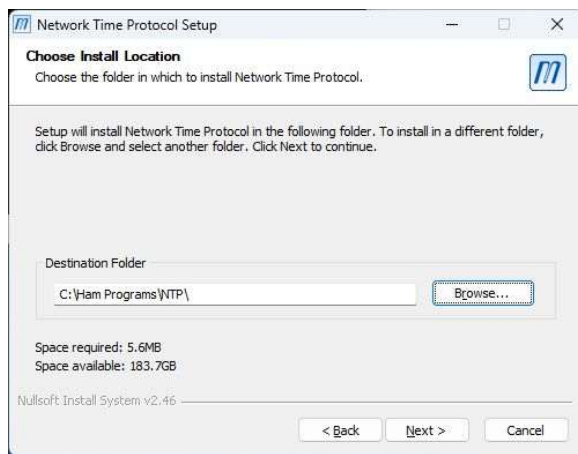
The reference NTP application ported to Windows is available from Meinberg Global (makers of network time appliances):

Downloaded Meinberg NTP from:

<https://www.meinbergglobal.com/english/sw/ntp.htm#ntp_stable>

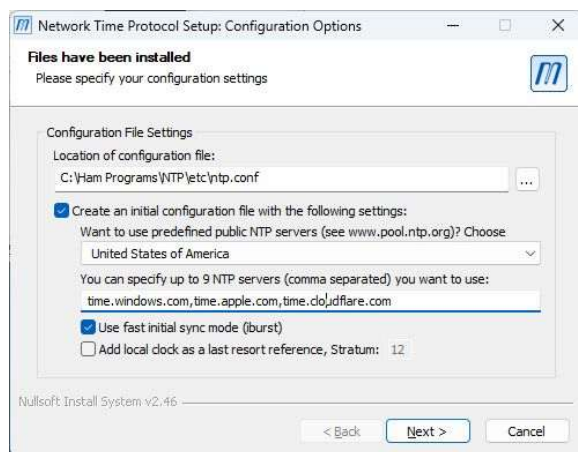
as of this writing, the current version is ntp-4.2.8p15a-win31-setup.exe.

1) Run the installer.



Because NTP stores user editable files in its directory, it should not be installed in C:\Program Files (x86). I typically install all of my amateur applications in C:\Ham Programs.

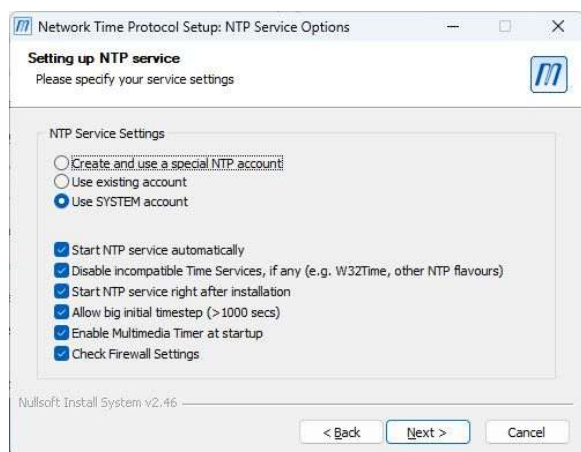
2) Select all of the components. The documentation is optional - it is links to web documents.



3) When presented with the "Setup Config Options", select "Create and initial configuration with the following settings" and then pick your country or region.

Because the installer only creates three servers, you will want to specify at least three additional servers to allow NTP to detect "false tickers". A good selection of public servers is: time.cloudflare.com, time.apple.com, time.windows.com, and time.nist.gov. You may also have access

to time servers from a local university, ISP or utility.

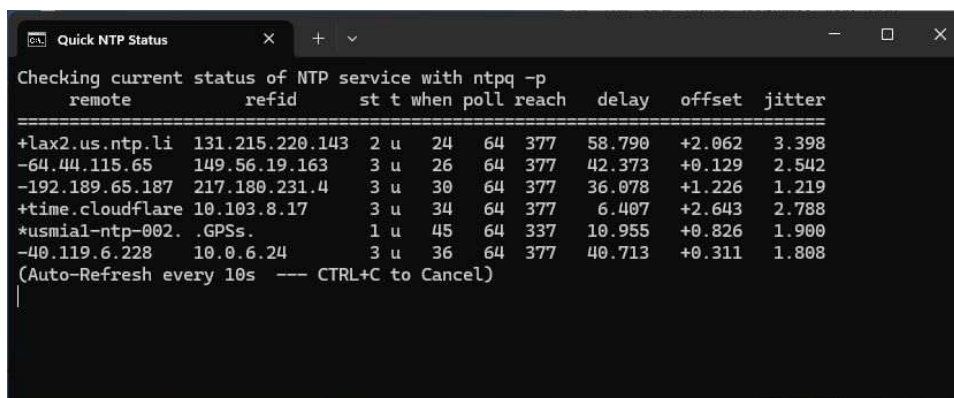


4) Install NTP as a service in the System account. Other options will result in difficulties starting NTP.

5) Click "Next" to complete the installation.

6) "Finish" will close the installer and start NTP.

7) To verify NTP is running, click on the "Quick NTP Status" shortcut in the Meinberg Program Group and allow it to run for a few minutes:



This shows the three pool servers plus the three additional servers. NTP is "peered" to the server with the "*" in front (in this case time.apple.com) and has two other valid "backup" servers (those with the "+"). The display shows that each server is being polled every 64 seconds and that five of the six servers were successfully polled in each of the last eight minutes.

7) There are a some other refinements that will make it easier to work with NTP.

Navigate to the Meinberg program group in the Windows Menu, right click on "Edit NTP configuration", select More, and Open file location. Right click on the Edit NTP configuration shortcut , select Properties, Advanced and check Run as Administrator.

Then navigate to "Service Control" following the steps above and set each of the three shortcuts there to also Run as Administrator.

Optional: Meinberg offer a Windows GUI application for monitoring and controlling NTP. Meinberg Time Server Monitor can be dowloaded from: <https://www.meinbergglobal.com/english/sw/ntp-server-monitor.htm>